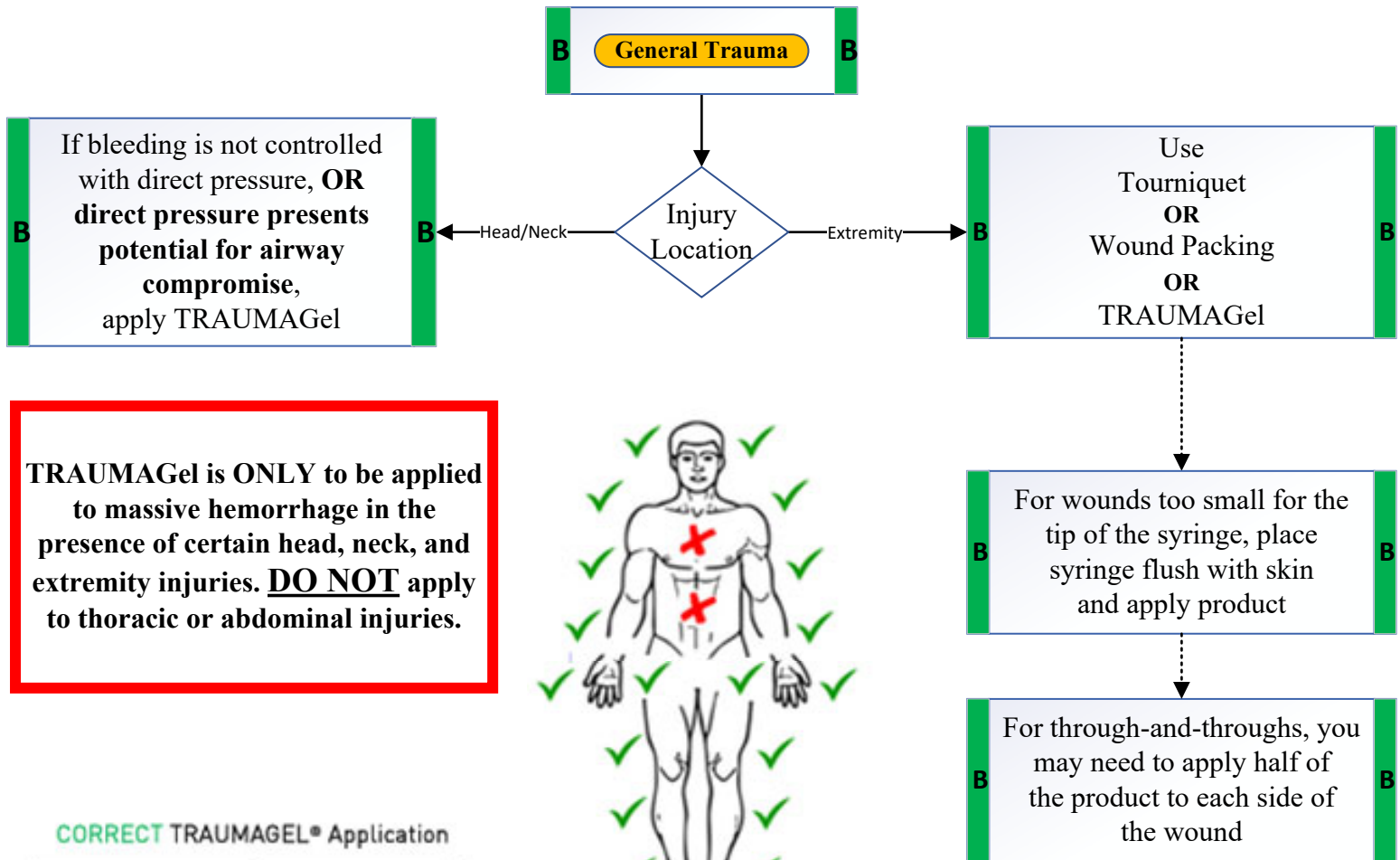


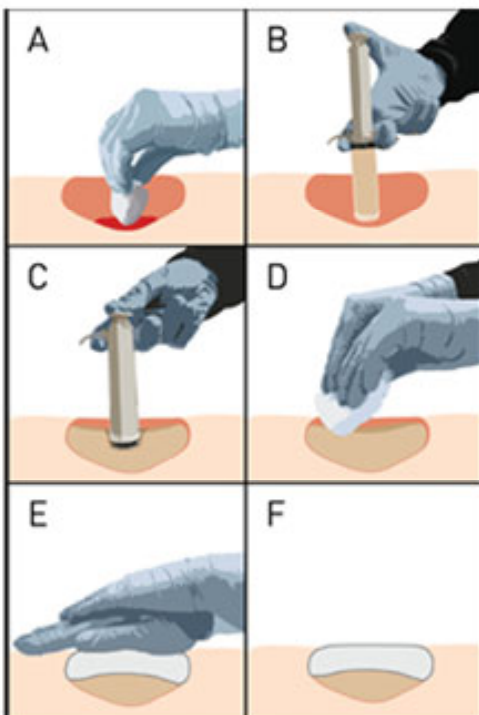
TRAUMAGel Trial

This temporary protocol of Greene County/Greeneville EMS is to be used as a trial to determine the efficacy of continued use of the TRAUMAGel product.



TRAUMAGel is **ONLY** to be applied to massive hemorrhage in the presence of certain head, neck, and extremity injuries. **DO NOT** apply to thoracic or abdominal injuries.

CORRECT TRAUMAGel® Application



General Use Instructions:

- A Dry wound as much as possible using gauze or suction (leave in place until ready to apply product)
- B When ready to apply, unscrew applicator cap, remove gauze, insert applicator tip as deep into the wound/as close to the source of bleeding as possible
- C Deploy entire syringe into wound
- D Immediately remove applicator and place gauze on top of product. Avoid ejecting any of the underlying product
- E Hold moderate pressure for at least 3 minutes
- F Secure gauze as normal

Patients on blood thinners or with significant blood loss may require pressure for more than 3 minutes for clot formation