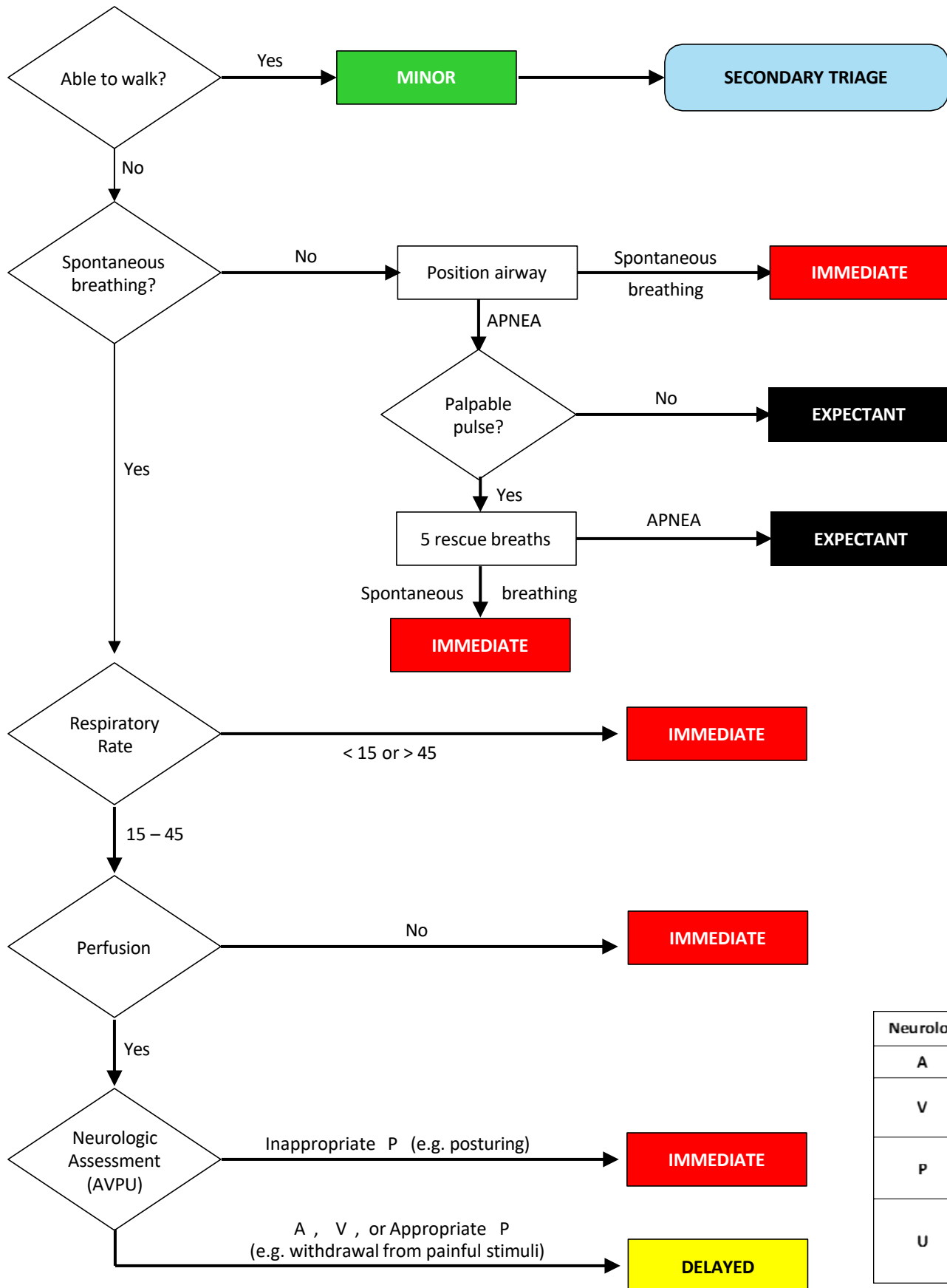


Appendix V: JumpSTART Pediatric Triage

The primary difference between JumpSTART & START is in Step 2 – using rescue breaths to make triage decisions

If a victim appears to be a child, use JumpSTART
If a victim appears to be a young adult, use START



Neurological Assessment	
A	Alert
V	Responds to Verbal Stimuli
P	Responds to Painful Stimuli
U	Unresponsive to Noxious Stimuli

Chris Bucher