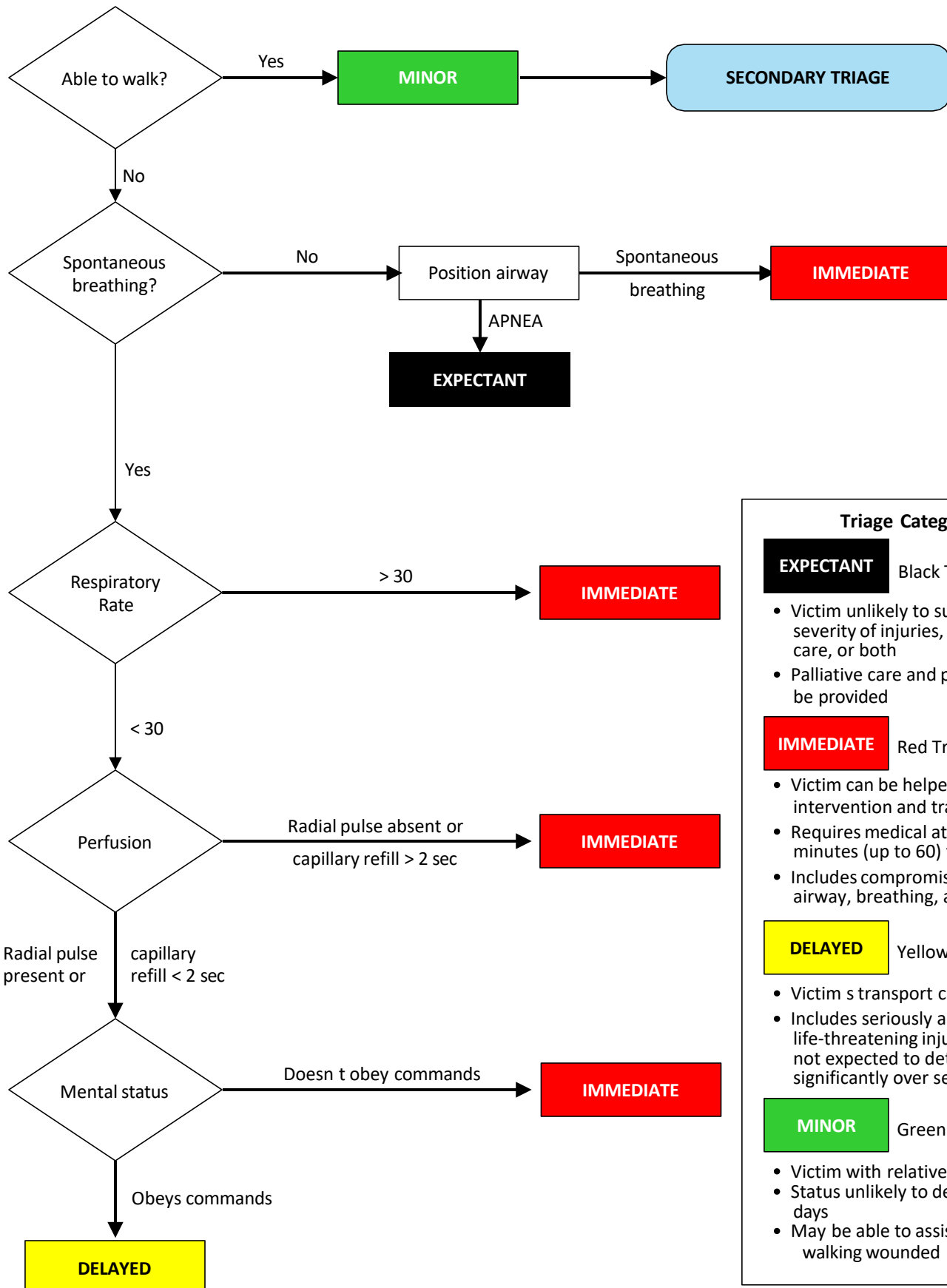


Appendix IV: START Adult Triage

S.T.A.R.T. = Simple Triage and Rapid Treatment
Remember RPM: Respirations, Pulse, Mentation



Triage Categories

EXPECTANT

Black Triage Tag Color

- Victim unlikely to survive given severity of injuries, level of available care, or both
- Palliative care and pain relief should be provided

IMMEDIATE

Red Triage Tag Color

- Victim can be helped by immediate intervention and transport
- Requires medical attention within minutes (up to 60) for survival
- Includes compromises to patient's airway, breathing, and circulation

DELAYED

Yellow Triage Tag Color

- Victim's transport can be delayed
- Includes seriously and potentially life-threatening injuries, but status not expected to deteriorate significantly over several hours

MINOR

Green Triage Tag Color

- Victim with relatively minor injuries
- Status unlikely to deteriorate over days
- May be able to assist in own care: walking wounded