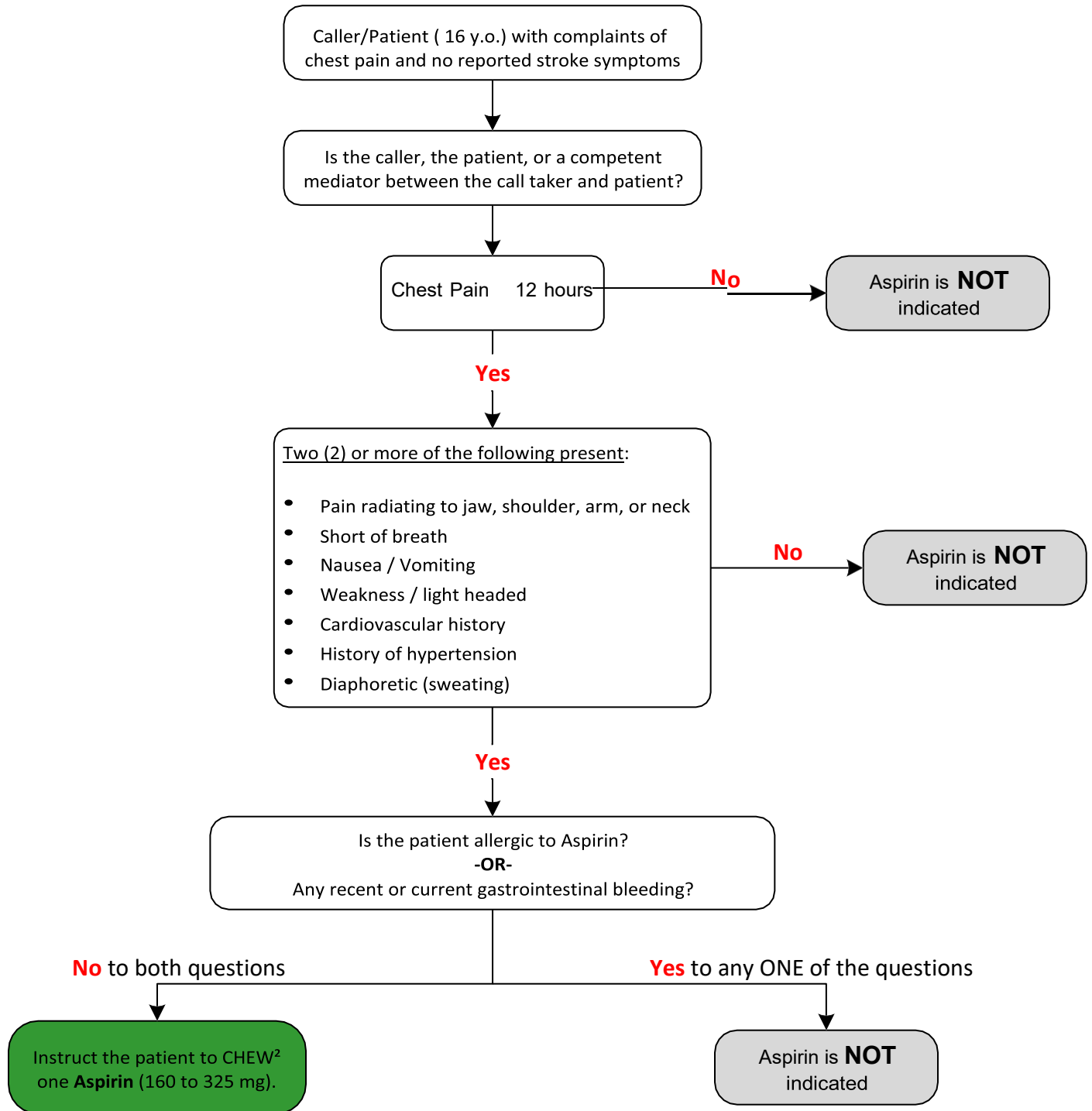


## Communication Center Aspirin Protocol

JPASD does not currently operate a EMS dispatch. American Heart Association guidelines in *Advanced Cardiovascular Life Support* have EMS dispatchers telling callers (patients) to take aspirin when an Acute Coronary Syndrome (ACS) is suspected. ACS includes stable and unstable angina and acute myocardial infarctions (AMI).



<sup>1</sup> If unable to determine if an aspirin was taken in the past 24 hours, consider the answer to be NO.

<sup>2</sup> If the patient is unable to chew, they may use water. Once the patient chews the aspirin they may follow up with a few sips of water

\*Guidelines based on- Stabilization of the Patient with Acute Coronary Syndromes *Circulation*. 2005. 8:89-91