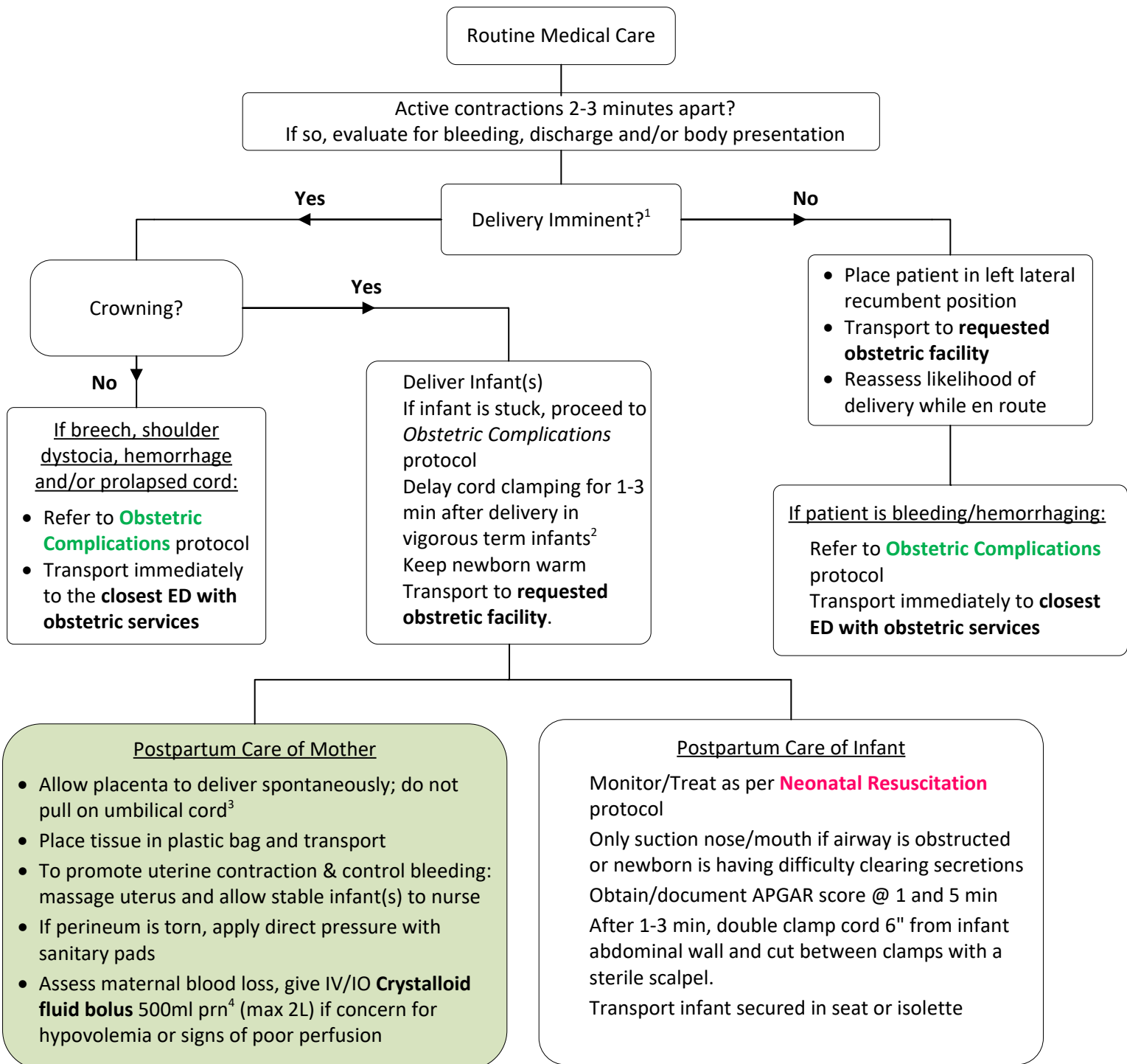


Emergency Childbirth



¹ Signs of imminent delivery: crowning, bulging perineum, urge to push, urge to move bowels. Obtain IV access for any imminent delivery or if patient says she is "high risk."

² If resuscitation is needed, clamp cord and cut ASAP.

³ Do not delay transport awaiting placenta delivery. All products of conception must accompany mother to the ED.

⁴ Lactated Ringers is crystalloid fluid of choice if available.

If possible, transport between deliveries when multiple births are expected.

Delivery Procedure

- 1) Position mother supine on a flat surface, if possible
- 2) Protect perineum with gentle hand pressure
- 3) Support and control delivery of head as it emerges
- 4) As shoulders emerge gently guide head/neck downward to deliver anterior shoulder
- 5) Support and gently lift head/neck to deliver posterior shoulder
- 6) Rest of infant should deliver with passive participation

Do not attempt to impair or delay delivery