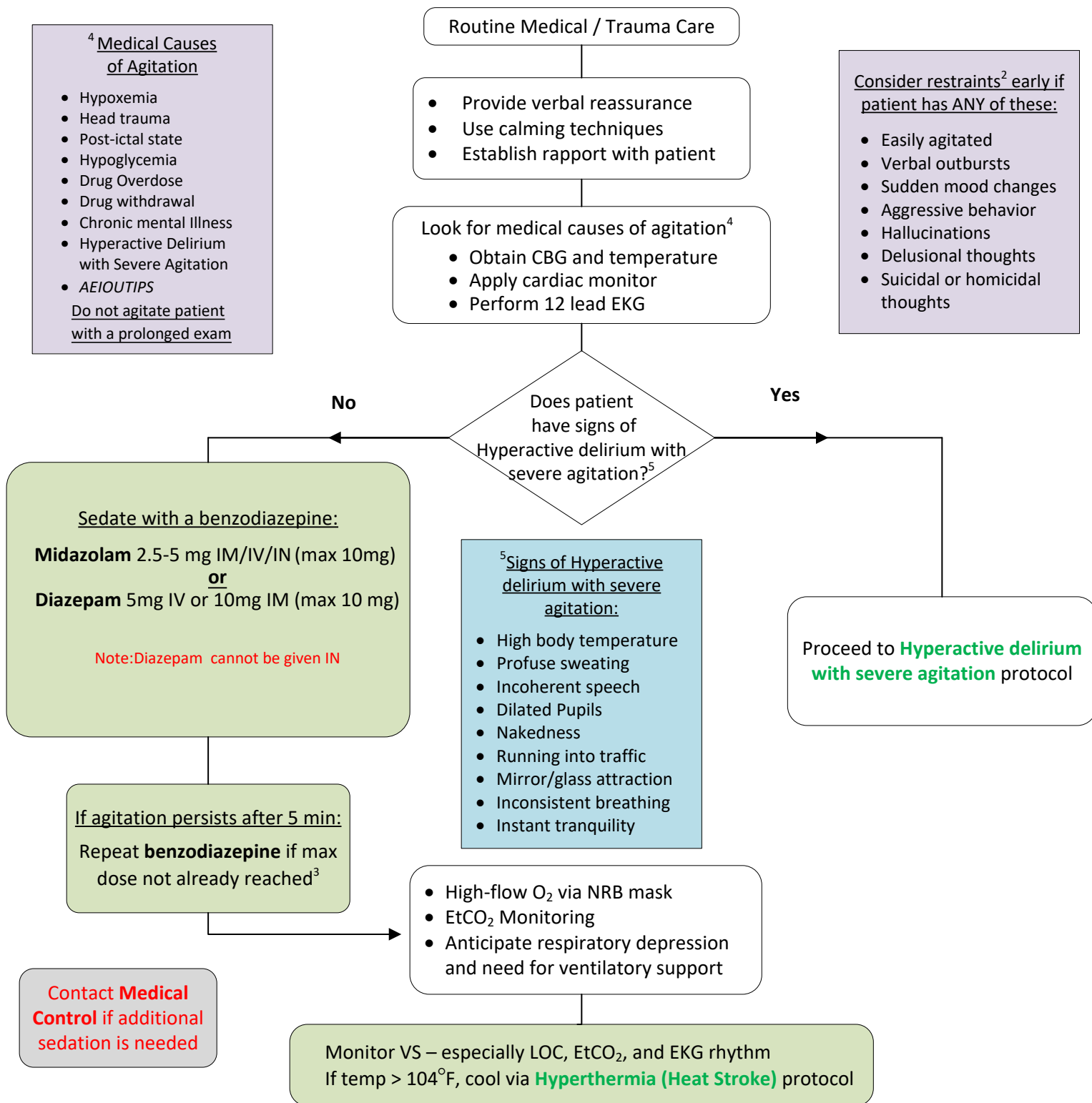


Agitated/Combative Patient

Do not attempt to enter or control a scene where physical violence or weapons are present. Dispatch law enforcement immediately. Maintain scene safety and leave the scene if it becomes unsafe at any point.¹



¹ In case of threat during transport: Stop, Communicate your location/needs, Stand (with your partner). Provider safety 1st!

² Secure all four extremities to maximize safety. Placement of the stretcher in sitting position prevents aspiration and reduces the patient's strength by place the abdominal muscles in flexed position. Restraints should not restrict chest wall motion, compress the neck, or compromise the airway.

³ Cocktails/mixtures of drug classes should be avoided to prevent complications, including arrhythmias and respiratory depression.

Chris D. [Signature]